

91 MARINE
— HASTINGS —

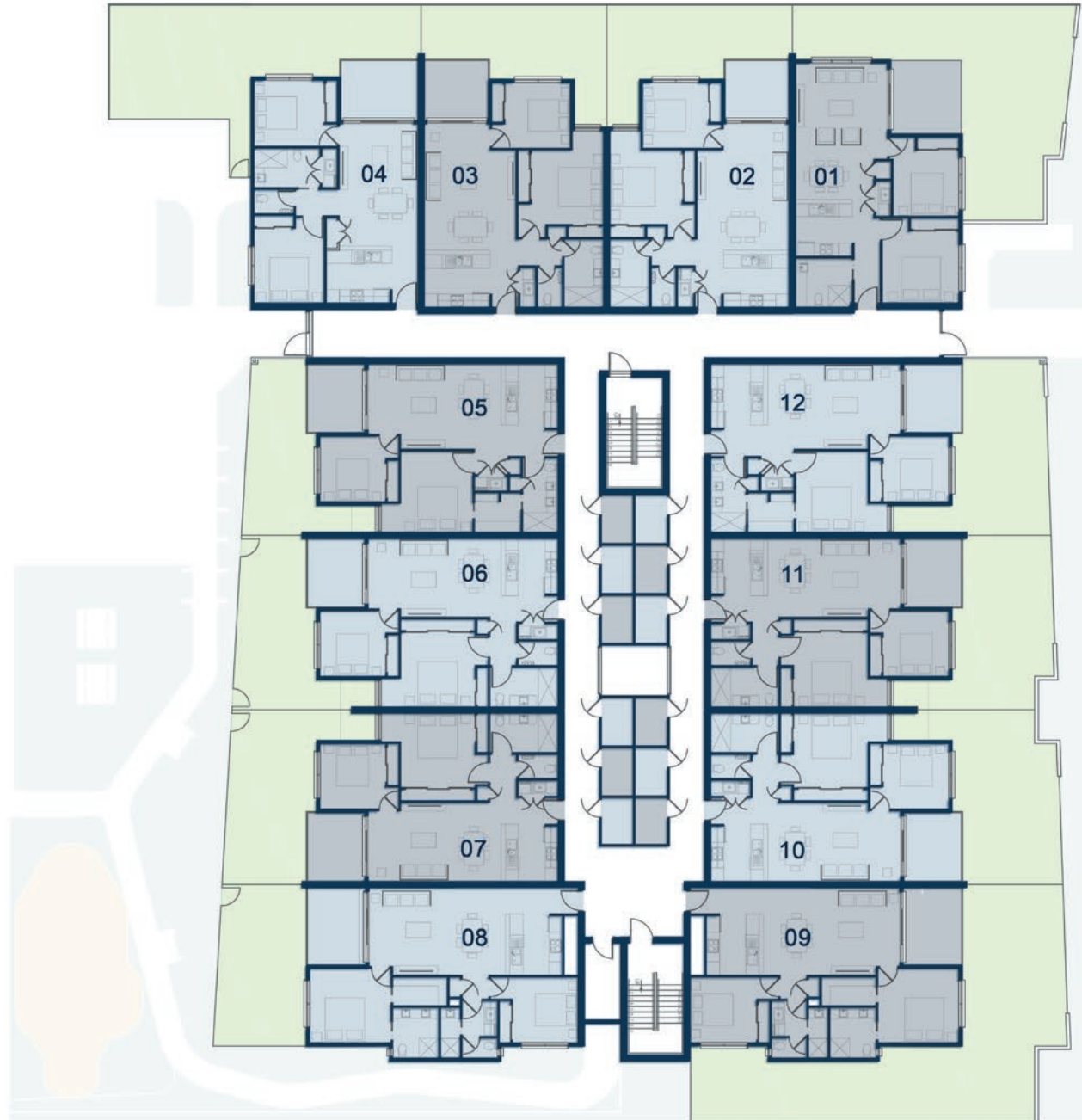
91 MARINE

— HASTINGS —

GROUND FLOOR

01	Internal	- 78.5	m2
	Alfresco	- 11.0	m2
	Backyard	- 63.0	m2
	TOTAL	- 152.5	m2
02	Internal	- 82.0	m2
	Alfresco	- 8.6	m2
	Backyard	- 34.0	m2
	TOTAL	- 124.6	m2
03	Internal	- 82.0	m2
	Alfresco	- 8.6	m2
	Backyard	- 34.0	m2
	TOTAL	- 124.6	m2
04	Internal	- 75.0	m2
	Alfresco	- 9.8	m2
	Backyard	- 73.0	m2
	TOTAL	- 157.8	m2
05	Internal	- 80.8	m2
	Alfresco	- 9.2	m2
	Backyard	- 32.0	m2
	TOTAL	- 122.0	m2
06	Internal	- 79.0	m2
	Alfresco	- 8.8	m2
	Backyard	- 36.0	m2
	TOTAL	- 123.8	m2
07	Internal	- 79.0	m2
	Alfresco	- 8.8	m2
	Backyard	- 39.0	m2
	TOTAL	- 126.8	m2
08	Internal	- 89.0	m2
	Alfresco	- 8.8	m2
	Backyard	- 38.0	m2
	TOTAL	- 135.8	m2
09	Internal	- 89.0	m2
	Alfresco	- 8.8	m2
	Backyard	- 79.0	m2
	TOTAL	- 176.8	m2
10	Internal	- 79.0	m2
	Alfresco	- 8.8	m2
	Backyard	- 44.0	m2
	TOTAL	- 131.8	m2
11	Internal	- 79.0	m2
	Alfresco	- 8.8	m2
	Backyard	- 42.0	m2
	TOTAL	- 129.8	m2
12	Internal	- 80.8	m2
	Alfresco	- 9.2	m2
	Backyard	- 41.0	m2
	TOTAL	- 131.0	m2

This document has been produced solely for the information for potential purchaser, to assist them in deciding whether they are sufficiently interested in the properties to proceed further. The information contained in this material has been produced in good faith with due care. We do not warrant the accuracy of any information contained herein and do not accept liability for negligence, any error or discrepancy or otherwise in the information. This document may be subject to change without notice.



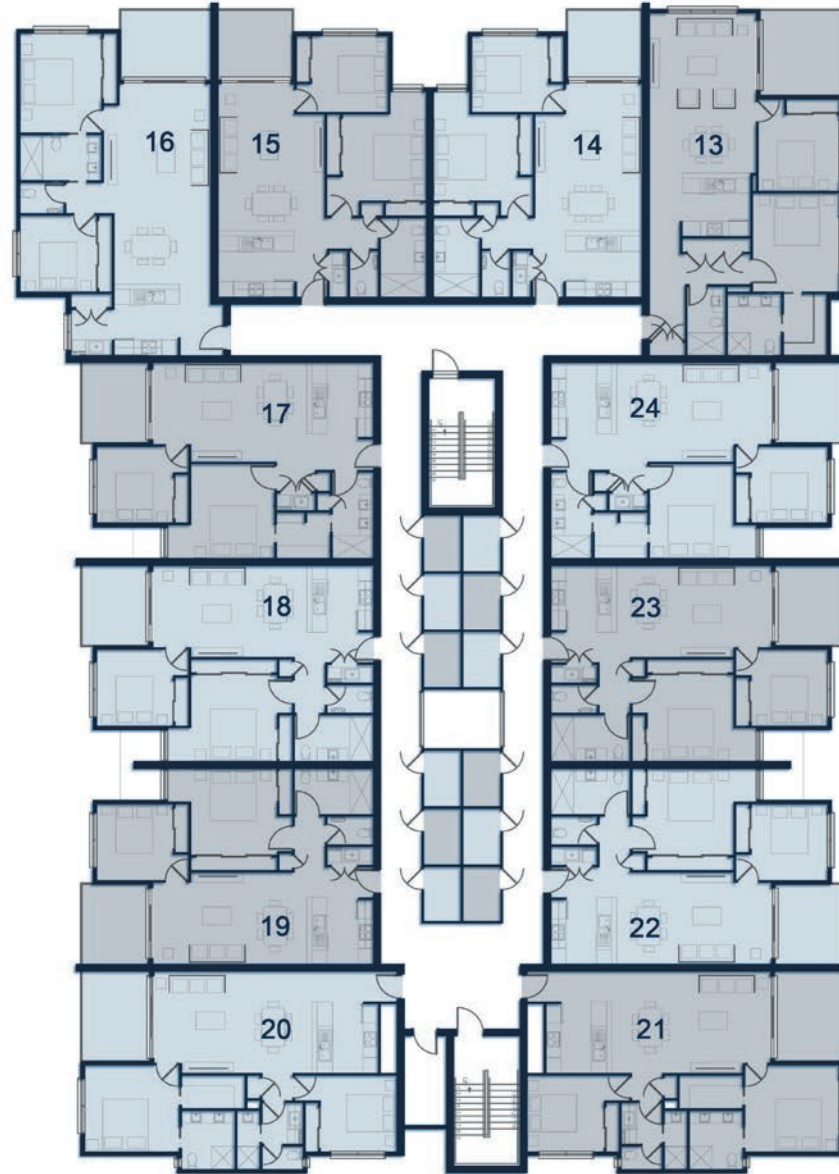
91 MARINE

— HASTINGS —

FIRST FLOOR

13	Internal	-	88.0	m ²
	Balcony	-	11.0	m ²
	TOTAL	-	99.0	m ²
14	Internal	-	82.0	m ²
	Balcony	-	8.6	m ²
	TOTAL	-	90.6	m ²
15	Internal	-	82.0	m ²
	Balcony	-	8.6	m ²
	TOTAL	-	90.6	m ²
16	Internal	-	88.0	m ²
	Balcony	-	9.8	m ²
	TOTAL	-	97.8	m ²
17	Internal	-	80.8	m ²
	Balcony	-	9.2	m ²
	TOTAL	-	90.0	m ²
18	Internal	-	79.0	m ²
	Balcony	-	8.8	m ²
	TOTAL	-	87.8	m ²
19	Internal	-	79.0	m ²
	Balcony	-	8.8	m ²
	TOTAL	-	87.8	m ²
20	Internal	-	89.0	m ²
	Balcony	-	8.8	m ²
	TOTAL	-	97.8	m ²
21	Internal	-	89.0	m ²
	Balcony	-	8.8	m ²
	TOTAL	-	97.8	m ²
22	Internal	-	79.0	m ²
	Balcony	-	8.8	m ²
	TOTAL	-	87.8	m ²
23	Internal	-	79.0	m ²
	Balcony	-	8.8	m ²
	TOTAL	-	87.8	m ²
24	Internal	-	80.8	m ²
	Balcony	-	9.2	m ²
	TOTAL	-	90.0	m ²

This document has been produced solely for the information for potential purchaser, to assist them in deciding whether they are sufficiently interested in the properties to proceed further. The information contained in this material has been produced in good faith with due care. We do not warrant the accuracy of any information contained herein and do not accept liability for negligence, any error or discrepancy or otherwise in the information. This document may be subject to change without notice.



91 MARINE

— HASTINGS —

UNIT 01
GROUND FLOOR

 - 2

 - 1

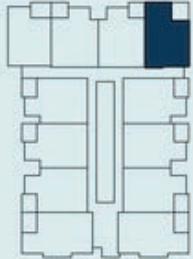
 - 1

Internal - 78.5 m²

Alfresco - 11.0 m²

Backyard - 63 m²

TOTAL - 152.5 m²



This document has been produced solely for the information for potential purchaser, to assist them in deciding whether they are sufficiently interested in the properties to proceed further. The information contained in this material has been produced in good faith with due care. We do not warrant the accuracy of any information contained herein and do not accept liability for negligence, any error or discrepancy or otherwise in the information. This document may be subject to change without notice.



91 MARINE

— HASTINGS —

UNIT 02
GROUND FLOOR

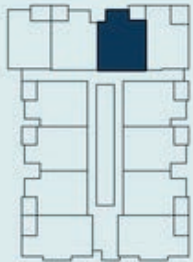


Internal - 82 m²

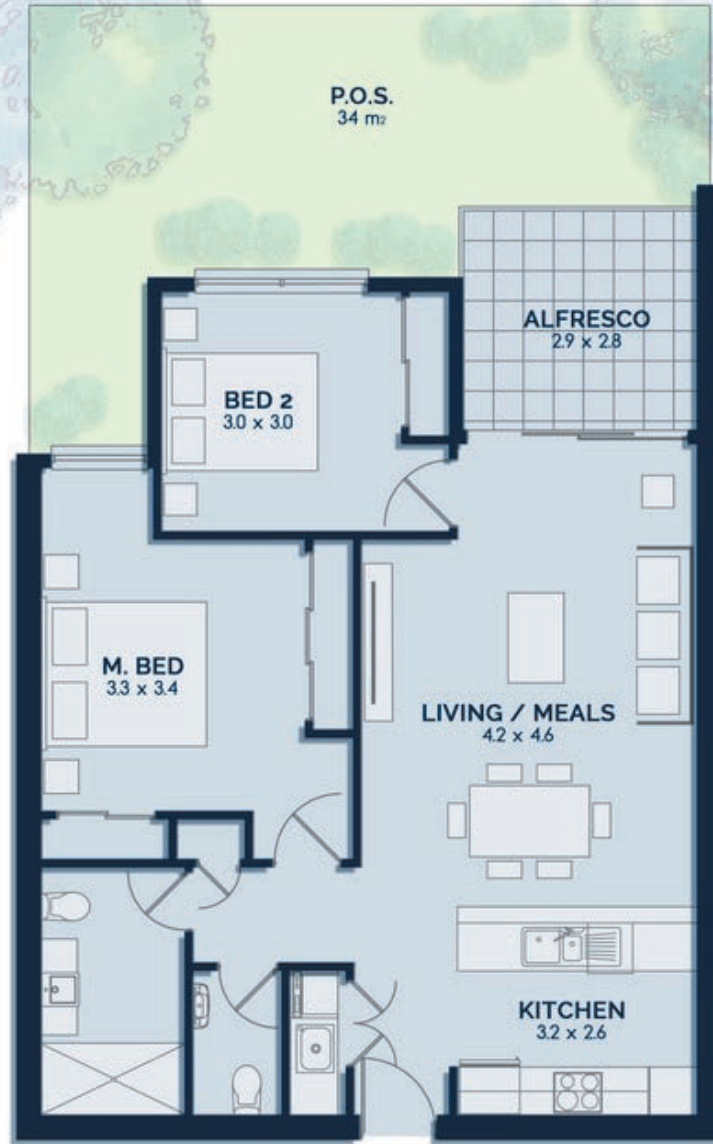
Alfresco - 8.6 m²

Backyard - 34 m²

TOTAL - 124.6 m²



This document has been produced solely for the information for potential purchaser, to assist them in deciding whether they are sufficiently interested in the properties to proceed further. The information contained in this material has been produced in good faith with due care. We do not warrant the accuracy of any information contained herein and do not accept liability for negligence, any error or discrepancy or otherwise in the information. This document may be subject to change without notice.



91 MARINE

— HASTINGS —

UNIT 03
GROUND FLOOR

 - 2

 - 2

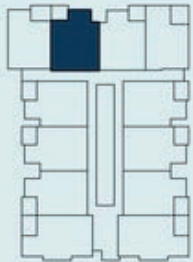
 - 1

Internal - 82 m²

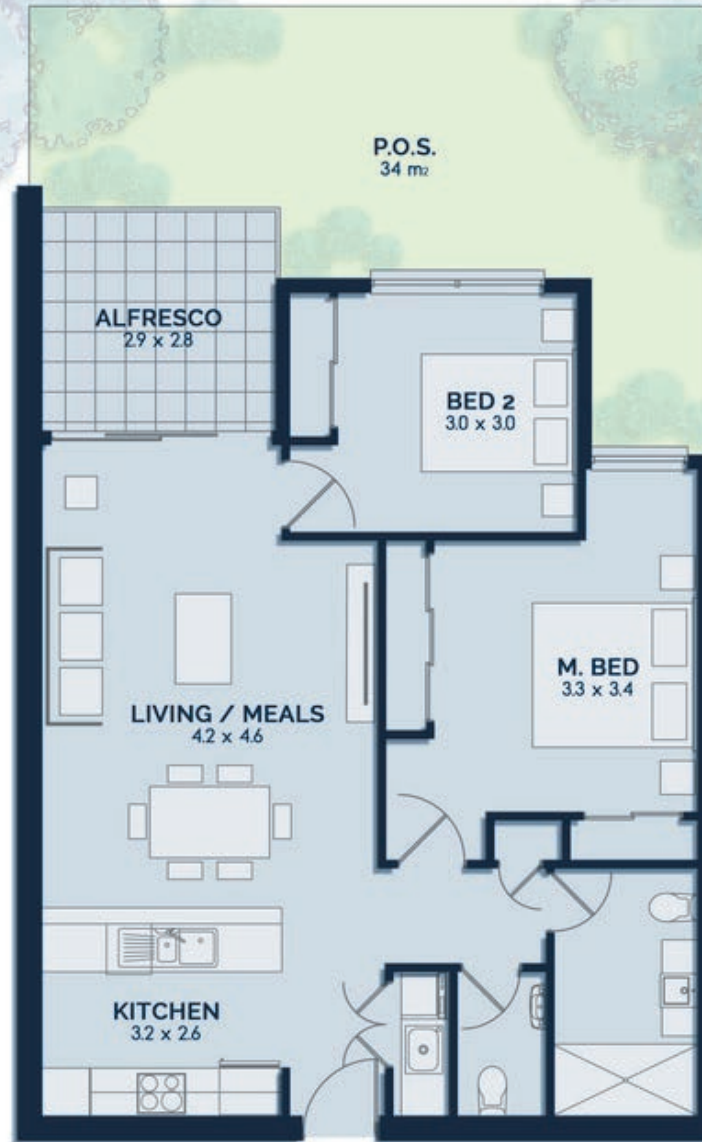
Alfresco - 8.6 m²

Backyard - 34 m²

TOTAL - 124.6 m²



This document has been produced solely for the information for potential purchaser, to assist them in deciding whether they are sufficiently interested in the properties to proceed further. The information contained in this material has been produced in good faith with due care. We do not warrant the accuracy of any information contained herein and do not accept liability for negligence, any error or discrepancy or otherwise in the information. This document may be subject to change without notice.



91 MARINE

— HASTINGS —

UNIT 04
GROUND FLOOR

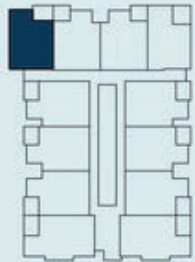


Internal - 75 m²

Alfresco - 9.8 m²

Backyard - 73 m²

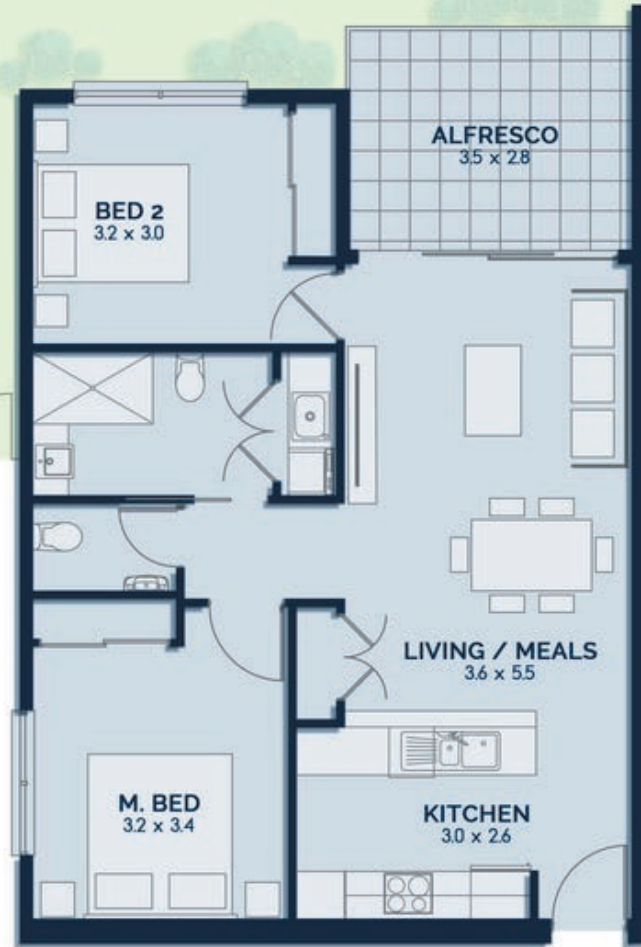
TOTAL - 157.8 m²



This document has been produced solely for the information for potential purchaser, to assist them in deciding whether they are sufficiently interested in the properties to proceed further. The information contained in this material has been produced in good faith with due care. We do not warrant the accuracy of any information contained herein and do not accept liability for negligence, any error or discrepancy or otherwise in the information. This document may be subject to change without notice.



P.O.S.
73 m²



91 MARINE

— HASTINGS —

UNIT 05
GROUND FLOOR

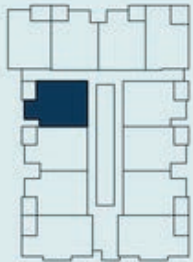


Internal - 80.8 m²

Alfresco - 9.2 m²

Backyard - 32 m²

TOTAL - 122 m²



This document has been produced solely for the information for potential purchaser, to assist them in deciding whether they are sufficiently interested in the properties to proceed further. The information contained in this material has been produced in good faith with due care. We do not warrant the accuracy of any information contained herein and do not accept liability for negligence, any error or discrepancy or otherwise in the information. This document may be subject to change without notice.



91 MARINE

— HASTINGS —

UNIT 06
GROUND FLOOR

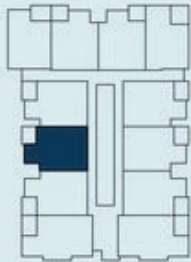


Internal - 79 m²

Alfresco - 8.8 m²

Backyard - 36 m²

TOTAL - 123.8 m²



This document has been produced solely for the information for potential purchaser, to assist them in deciding whether they are sufficiently interested in the properties to proceed further. The information contained in this material has been produced in good faith with due care. We do not warrant the accuracy of any information contained herein and do not accept liability for negligence, any error or discrepancy or otherwise in the information. This document may be subject to change without notice.



91 MARINE

— HASTINGS —

UNIT 07
GROUND FLOOR



- 2



- 2



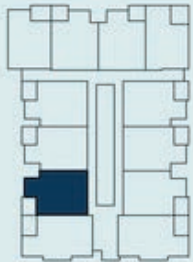
- 1

Internal - 79 m²

Alfresco - 8.8 m²

Backyard - 39 m²

TOTAL - 126.8 m²



This document has been produced solely for the information for potential purchaser, to assist them in deciding whether they are sufficiently interested in the properties to proceed further. The information contained in this material has been produced in good faith with due care. We do not warrant the accuracy of any information contained herein and do not accept liability for negligence, any error or discrepancy or otherwise in the information. This document may be subject to change without notice.



91 MARINE

— HASTINGS —

UNIT 08
GROUND FLOOR

 - 2

 - 2

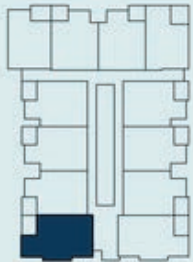
 - 1

Internal - 89.0 m²

Alfresco - 8.8 m²

Backyard - 38 m²

TOTAL - 135.8 m²



This document has been produced solely for the information for potential purchaser, to assist them in deciding whether they are sufficiently interested in the properties to proceed further. The information contained in this material has been produced in good faith with due care. We do not warrant the accuracy of any information contained herein and do not accept liability for negligence, any error or discrepancy or otherwise in the information. This document may be subject to change without notice.



91 MARINE

— HASTINGS —

UNIT 09
GROUND FLOOR

 - 2

 - 2

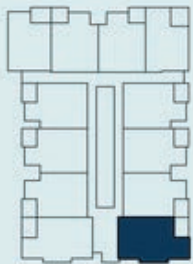
 - 1

Internal - 89.0 m²

Alfresco - 8.8 m²

Backyard - 79 m²

TOTAL - 176.8 m²



This document has been produced solely for the information for potential purchaser, to assist them in deciding whether they are sufficiently interested in the properties to proceed further. The information contained in this material has been produced in good faith with due care. We do not warrant the accuracy of any information contained herein and do not accept liability for negligence, any error or discrepancy or otherwise in the information. This document may be subject to change without notice.



91 MARINE

— HASTINGS —

UNIT 10
GROUND FLOOR

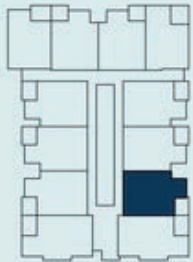


Internal - 79 m²

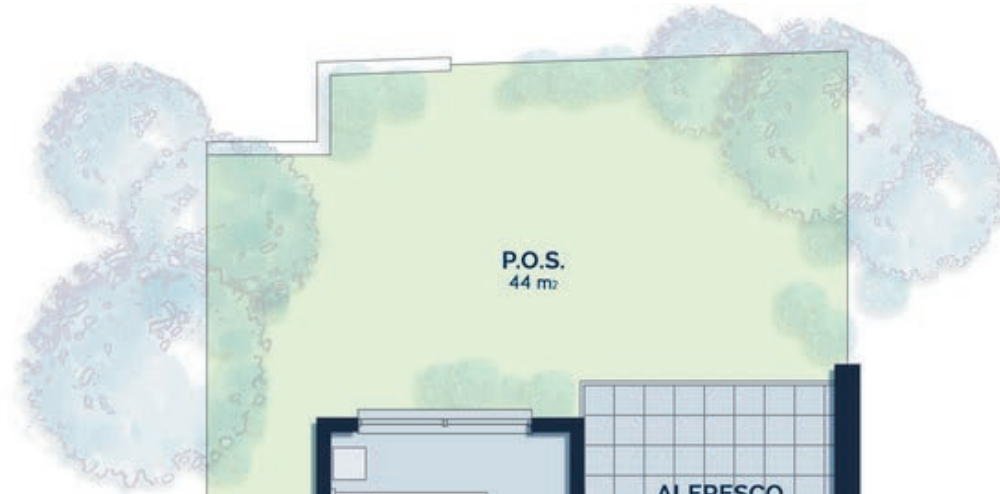
Alfresco - 8.8 m²

Backyard - 44 m²

TOTAL - 131.8 m²



This document has been produced solely for the information for potential purchaser, to assist them in deciding whether they are sufficiently interested in the properties to proceed further. The information contained in this material has been produced in good faith with due care. We do not warrant the accuracy of any information contained herein and do not accept liability for negligence, any error or discrepancy or otherwise in the information. This document may be subject to change without notice.



91 MARINE

— HASTINGS —

UNIT 11
GROUND FLOOR

 - 2

 - 2

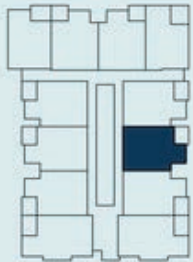
 - 1

Internal - 79 m²

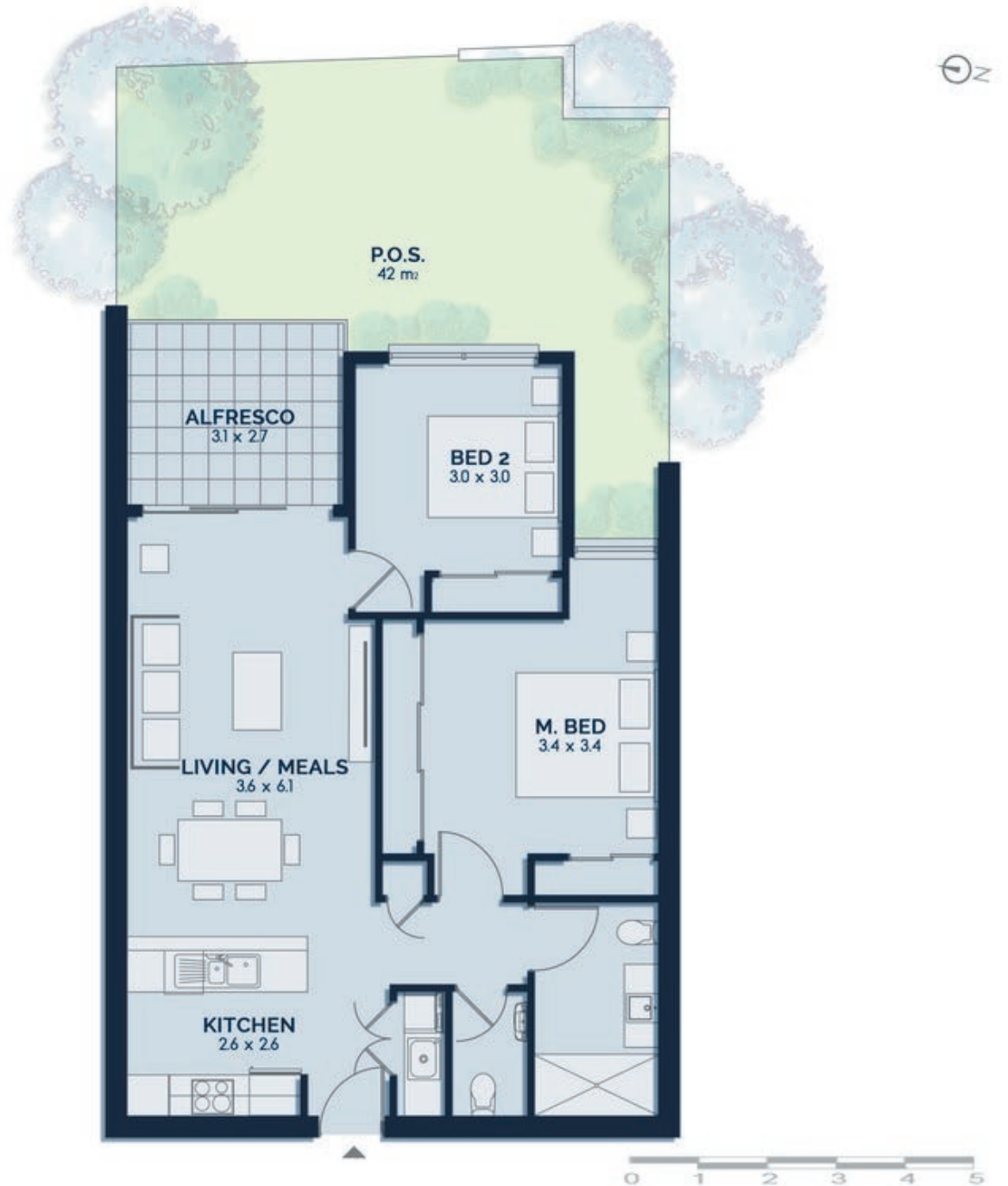
Alfresco - 8.8 m²

Backyard - 42 m²

TOTAL - 129.8 m²



This document has been produced solely for the information for potential purchaser, to assist them in deciding whether they are sufficiently interested in the properties to proceed further. The information contained in this material has been produced in good faith with due care. We do not warrant the accuracy of any information contained herein and do not accept liability for negligence, any error or discrepancy or otherwise in the information. This document may be subject to change without notice.



91 MARINE

— HASTINGS —

UNIT 12
GROUND FLOOR

 - 2

 - 1

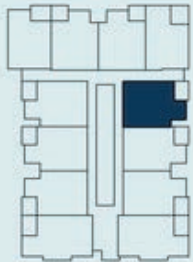
 - 1

Internal - 80.8 m²

Alfresco - 9.2 m²

Backyard - 41 m²

TOTAL - 131 m²



This document has been produced solely for the information for potential purchaser, to assist them in deciding whether they are sufficiently interested in the properties to proceed further. The information contained in this material has been produced in good faith with due care. We do not warrant the accuracy of any information contained herein and do not accept liability for negligence, any error or discrepancy or otherwise in the information. This document may be subject to change without notice.



91 MARINE

— HASTINGS —

UNIT 13
FIRST FLOOR

 - 2

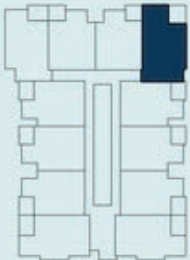
 - 2

 - 1

Internal - 88.0 m²

Balcony - 11.0 m²

TOTAL - 99.0 m²



This document has been produced solely for the information for potential purchaser, to assist them in deciding whether they are sufficiently interested in the properties to proceed further. The information contained in this material has been produced in good faith with due care. We do not warrant the accuracy of any information contained herein and do not accept liability for negligence, any error or discrepancy or otherwise in the information. This document may be subject to change without notice.



91 MARINE

— HASTINGS —

UNIT 14
FIRST FLOOR



- 2



- 2

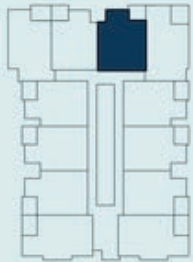


- 1

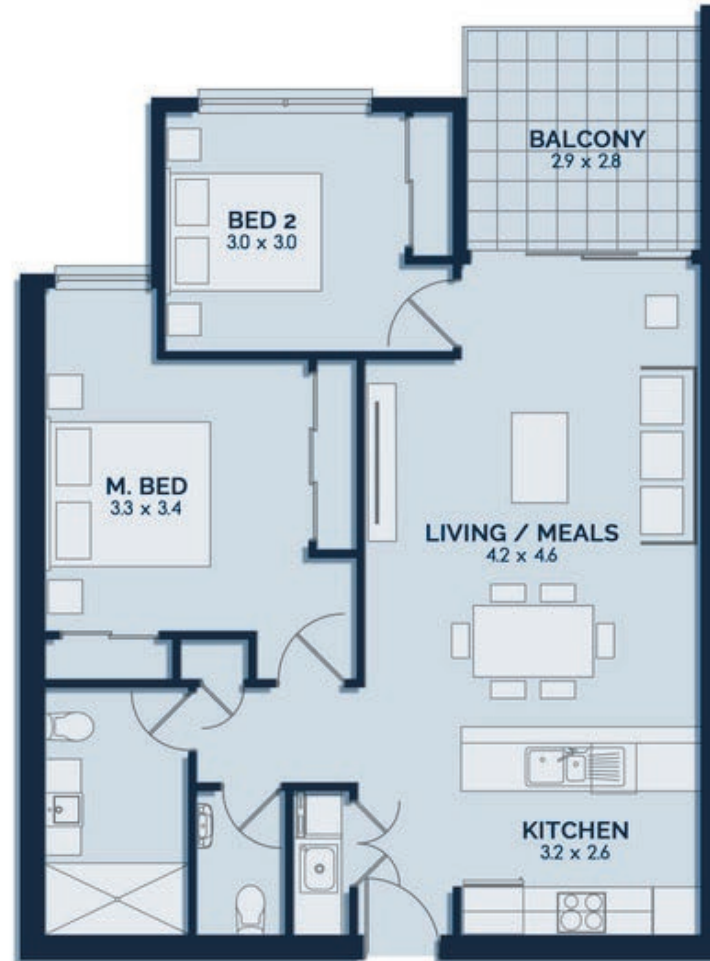
Internal - 82 m²

Balcony - 8.6 m²

TOTAL - 90.6 m²



This document has been produced solely for the information for potential purchaser, to assist them in deciding whether they are sufficiently interested in the properties to proceed further. The information contained in this material has been produced in good faith with due care. We do not warrant the accuracy of any information contained herein and do not accept liability for negligence, any error or discrepancy or otherwise in the information. This document may be subject to change without notice.



91 MARINE

— HASTINGS —

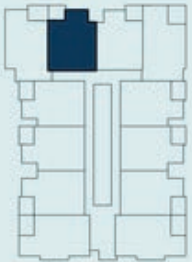
UNIT 15
FIRST FLOOR



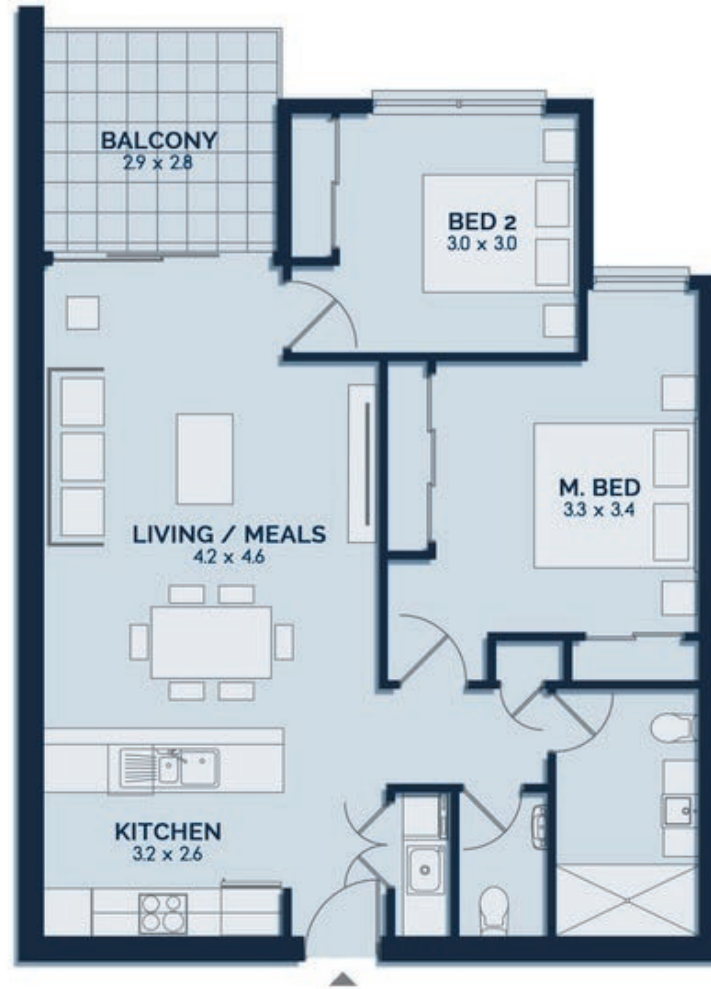
Internal - 82 m²

Balcony - 8.6 m²

TOTAL - 90.6 m²



This document has been produced solely for the information for potential purchaser, to assist them in deciding whether they are sufficiently interested in the properties to proceed further. The information contained in this material has been produced in good faith with due care. We do not warrant the accuracy of any information contained herein and do not accept liability for negligence, any error or discrepancy or otherwise in the information. This document may be subject to change without notice.



91 MARINE

— HASTINGS —

UNIT 16
FIRST FLOOR

 - 2

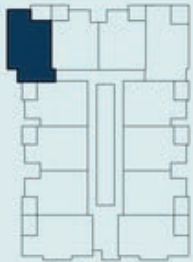
 - 2

 - 1

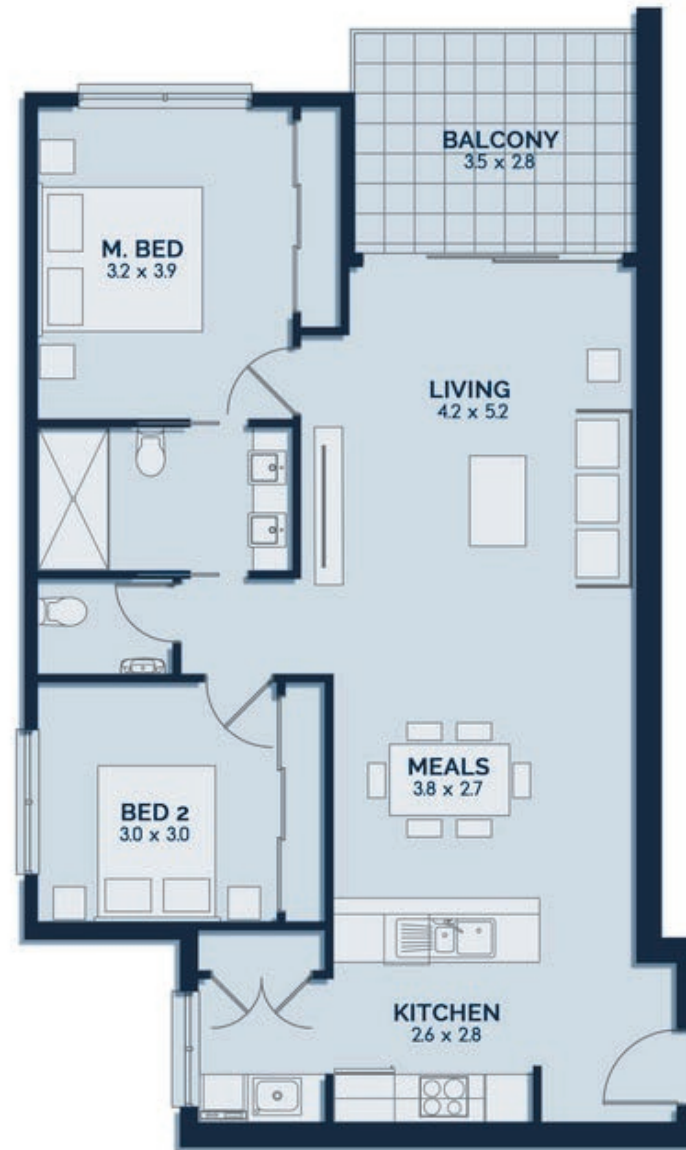
Internal - 88 m²

Balcony - 9.8 m²

TOTAL - 97.8 m²



This document has been produced solely for the information for potential purchaser, to assist them in deciding whether they are sufficiently interested in the properties to proceed further. The information contained in this material has been produced in good faith with due care. We do not warrant the accuracy of any information contained herein and do not accept liability for negligence, any error or discrepancy or otherwise in the information. This document may be subject to change without notice.



91 MARINE

— HASTINGS —

UNIT 17
FIRST FLOOR

 - 2

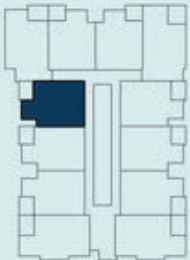
 - 1

 - 1

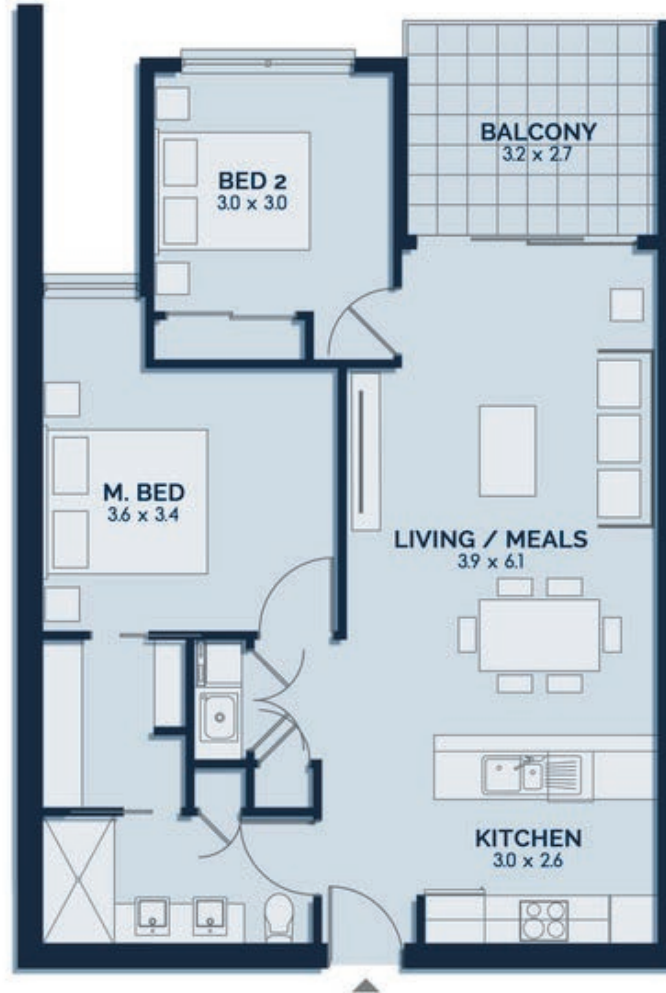
Internal - 80.8 m²

Balcony - 9.2 m²

TOTAL - 90 m²



This document has been produced solely for the information for potential purchaser, to assist them in deciding whether they are sufficiently interested in the properties to proceed further. The information contained in this material has been produced in good faith with due care. We do not warrant the accuracy of any information contained herein and do not accept liability for negligence, any error or discrepancy or otherwise in the information. This document may be subject to change without notice.



91 MARINE

— HASTINGS —

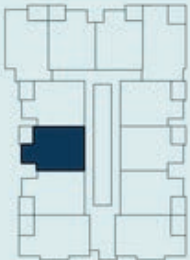
UNIT 18
FIRST FLOOR



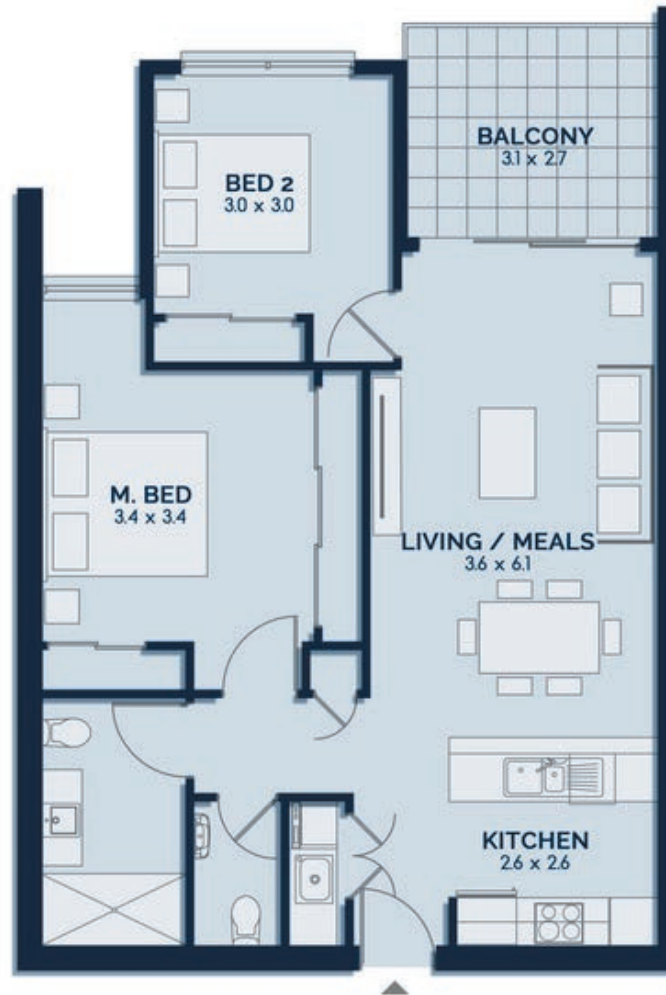
Internal - 79 m²

Balcony - 8.8 m²

TOTAL - 87.8 m²



This document has been produced solely for the information for potential purchaser, to assist them in deciding whether they are sufficiently interested in the properties to proceed further. The information contained in this material has been produced in good faith with due care. We do not warrant the accuracy of any information contained herein and do not accept liability for negligence, any error or discrepancy or otherwise in the information. This document may be subject to change without notice.



91 MARINE

— HASTINGS —

UNIT 19
FIRST FLOOR

 - 2

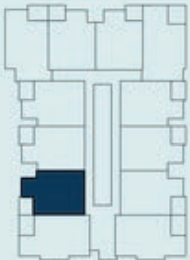
 - 2

 - 1

Internal - 79 m²

Balcony - 8.8 m²

TOTAL - 87.8 m²



This document has been produced solely for the information for potential purchaser, to assist them in deciding whether they are sufficiently interested in the properties to proceed further. The information contained in this material has been produced in good faith with due care. We do not warrant the accuracy of any information contained herein and do not accept liability for negligence, any error or discrepancy or otherwise in the information. This document may be subject to change without notice.



91 MARINE

— HASTINGS —

UNIT 20
FIRST FLOOR

 - 2

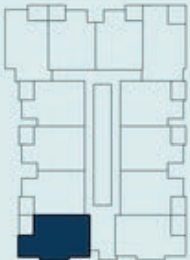
 - 2

 - 1

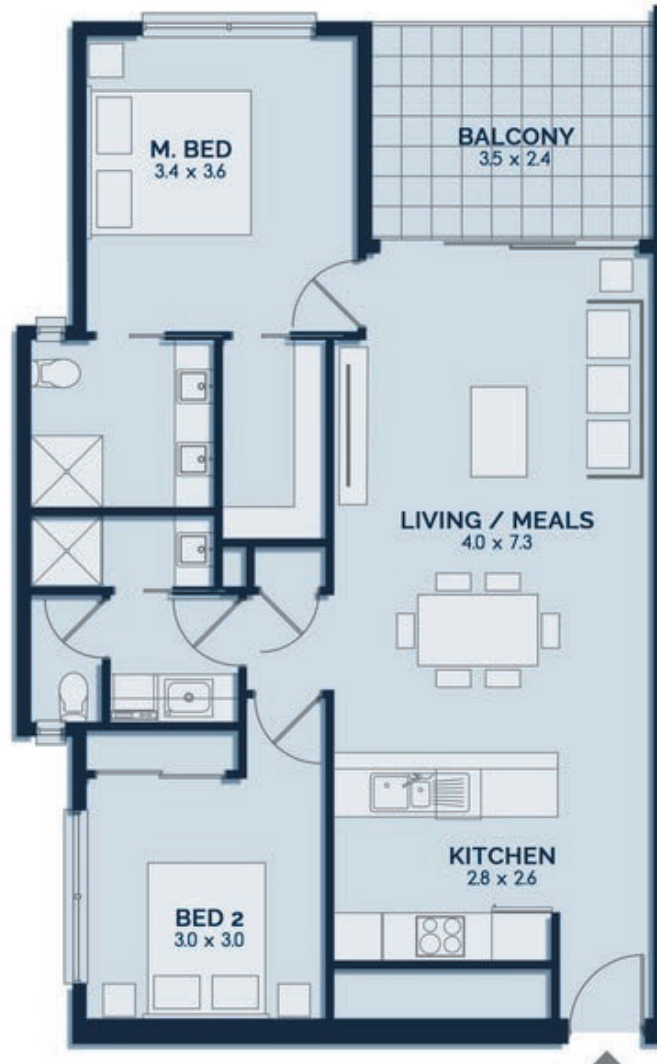
Internal - 89.0 m²

Balcony - 8.8 m²

TOTAL - 97.8 m²



This document has been produced solely for the information for potential purchaser, to assist them in deciding whether they are sufficiently interested in the properties to proceed further. The information contained in this material has been produced in good faith with due care. We do not warrant the accuracy of any information contained herein and do not accept liability for negligence, any error or discrepancy or otherwise in the information. This document may be subject to change without notice.



UNIT 21
FIRST FLOOR

 - 2

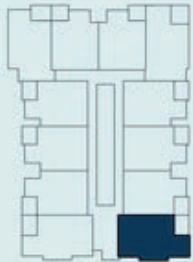
 - 2

 - 1

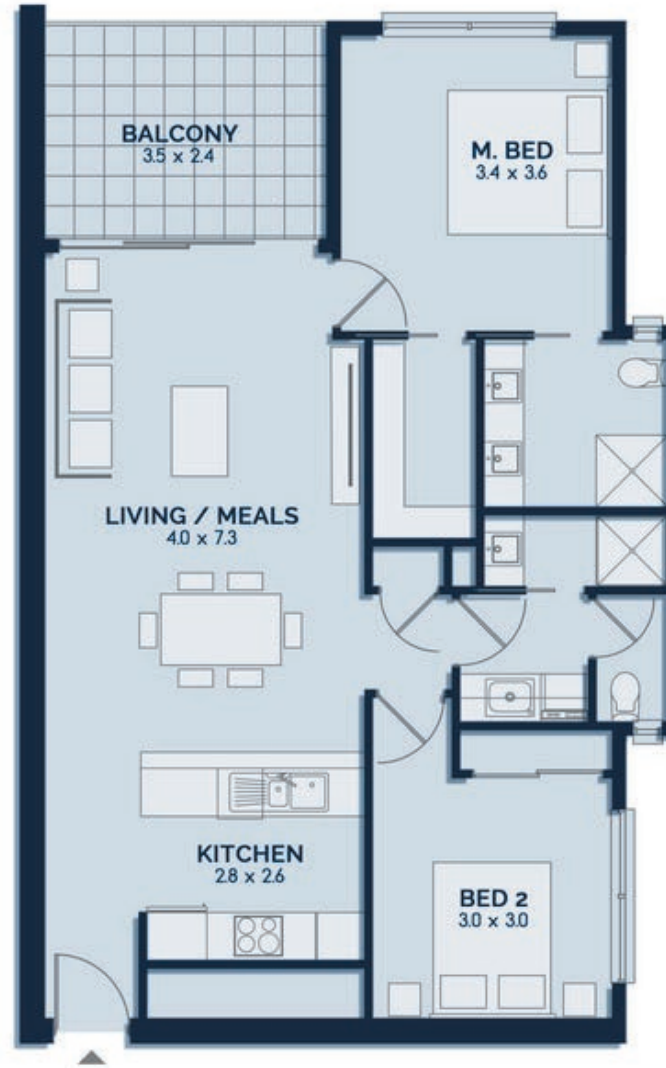
Internal - 89.0 m²

Balcony - 8.8 m²

TOTAL - 97.8 m²



This document has been produced solely for the information for potential purchaser, to assist them in deciding whether they are sufficiently interested in the properties to proceed further. The information contained in this material has been produced in good faith with due care. We do not warrant the accuracy of any information contained herein and do not accept liability for negligence, any error or discrepancy or otherwise in the information. This document may be subject to change without notice.



UNIT 22
FIRST FLOOR



- 2



- 2

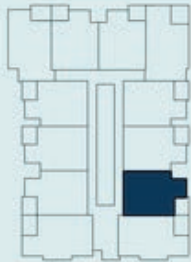


- 1

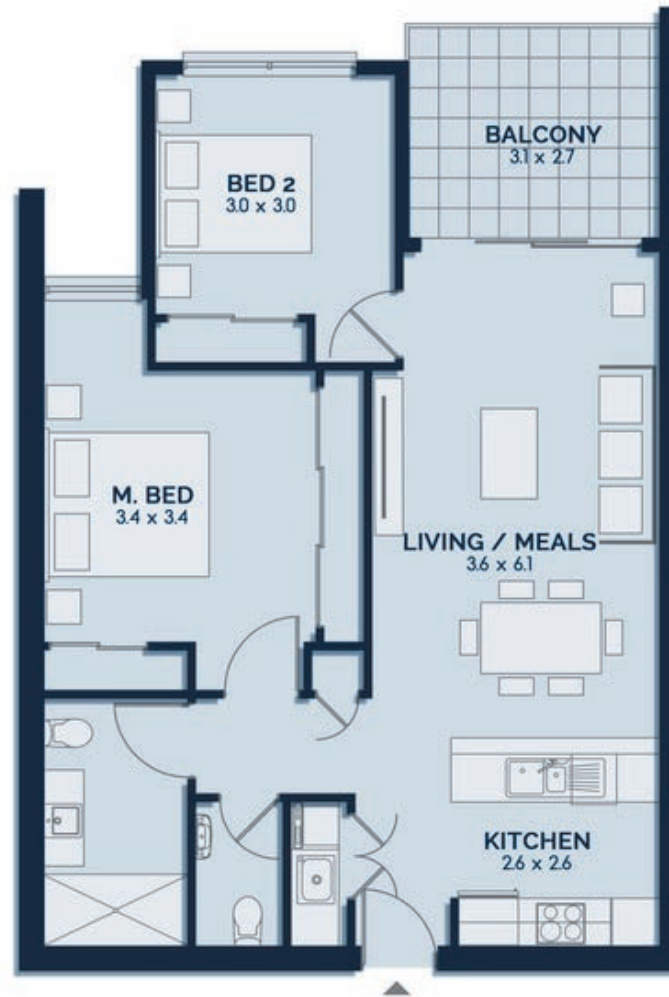
Internal - 79 m²

Balcony - 8.8 m²

TOTAL - 87.8 m²



This document has been produced solely for the information for potential purchaser, to assist them in deciding whether they are sufficiently interested in the properties to proceed further. The information contained in this material has been produced in good faith with due care. We do not warrant the accuracy of any information contained herein and do not accept liability for negligence, any error or discrepancy or otherwise in the information. This document may be subject to change without notice.



UNIT 23
FIRST FLOOR

 - 2

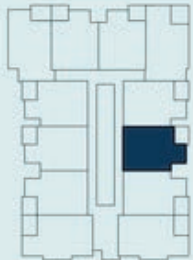
 - 2

 - 1

Internal - 79 m²

Balcony - 8.8 m²

TOTAL - 87.8 m²



This document has been produced solely for the information for potential purchaser, to assist them in deciding whether they are sufficiently interested in the properties to proceed further. The information contained in this material has been produced in good faith with due care. We do not warrant the accuracy of any information contained herein and do not accept liability for negligence, any error or discrepancy or otherwise in the information. This document may be subject to change without notice.



UNIT 24
FIRST FLOOR

 - 2

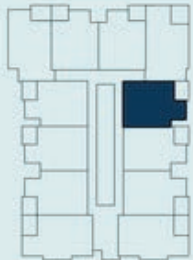
 - 1

 - 1

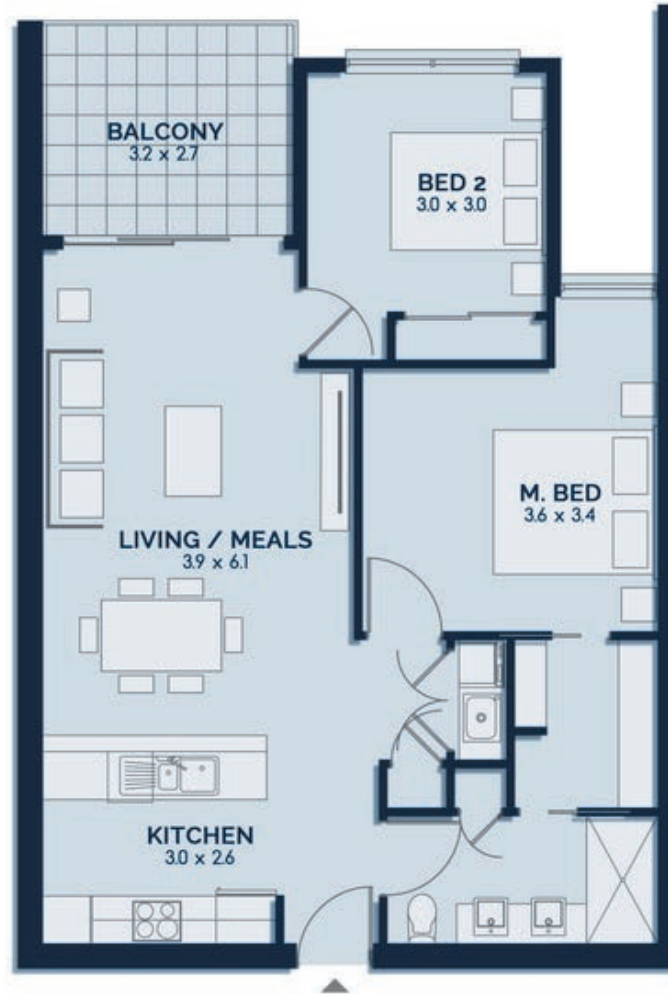
Internal - 80.8 m²

Balcony - 9.2 m²

TOTAL - 90 m²



This document has been produced solely for the information for potential purchaser, to assist them in deciding whether they are sufficiently interested in the properties to proceed further. The information contained in this material has been produced in good faith with due care. We do not warrant the accuracy of any information contained herein and do not accept liability for negligence, any error or discrepancy or otherwise in the information. This document may be subject to change without notice.



Another quality project delivered by:

PIERMONT

GROUP

www.91marine.com.au